

Chartered Status for mentors

2023

Be recognised for your
mentoring expertise



CHARTERED
COLLEGE OF
TEACHING

Contents

03	What our members say	18	Recognition of Prior Certificated Learning (RPCL)
04	Be recognised for your expertise	19	Professional Principles
05	About Chartered Teacher (Mentor) Status	23	Award and graduation
07	Why become Chartered?	24	Eligibility criteria
08	Your pathway to Chartered status	25	Reaccreditation
10	Assessment Units: Mentor Pathway	26	What our members say
17	Support available for candidates		



What our members say

“

[It] has completely transformed my teaching practice. It has not only given me confidence to implement new teaching strategies but has provided me with a greater understanding of educational research. My interventions are now clearly thought out and firmly embedded in research; I cannot wait to see the long-term results!

“

Chartered Teachers must prove that they use latest educational research in teaching practice day to day and, in doing so, that they inspire other colleagues and their school as a whole to keep up to date with the latest research-based teaching techniques.

“

I would definitely recommend it to other heads/SLT members. It has been an intensive way of providing experience and valued teachers with CPD that has a real focus on teaching and learning, with a focus on exploring evidence-based research and increasing the use of research within a school.

Be recognised for your expertise

Chartered Teacher (Mentor) Status recognises the knowledge, skills and behaviours of highly accomplished mentors, focusing on developing and recognising high-quality teaching and mentoring practice.

As you work towards Chartered Status, you'll be engaging with research and evidence and seeking out professional learning and development opportunities that support you to increase your impact in your context, and to attain the high standard expected of Chartered Teachers.

The process of becoming Chartered is designed to be both challenging and hugely rewarding. You will have the opportunity to showcase your professional expertise through our rigorous Chartered Status assessments and examinations, and will join a community of teachers and school leaders who are committed to building their professional expertise for the benefit of the children they teach.



CTeach has made grow in confidence in my own ability to provide an excellent education for the students I am privileged to teach.



About Chartered Teacher (Mentor) Status

New for 2023, Chartered Teacher (Mentor) Status celebrates mentors' essential role in supporting teacher development. Mentors will have the opportunity to develop and showcase their strong teaching and mentoring knowledge and practice through the completion of four assessment units before making their final application to become Chartered.

Two of the assessment units have a discrete mentoring focus, whilst the other two assessment units (from our Chartered Teacher pathway) focus on using evidence-informed approaches as part of everyday classroom practice:

- Certificate in Evidence-Informed Practice
- Professional Knowledge (Examinations) Award (Mentor)
- Development of Teaching Practice Award (Mentor)
- Certificate in Education Research and Inquiry

Each unit is certified by the Chartered College of Teaching and will be accessed through our online platform, allowing you to work towards Chartered Status at a pace that best suits you. You can complete the assessment units independently, or may be supported by a school or CPD provider to undertake one or more assessment unit.



“

The course has given me a fresh level of confidence in my own abilities.

Why become Chartered?

In becoming Chartered, you will be recognised for evidence-informed, high-quality teaching and mentoring practice, benefiting your mentees, your school and the children and young people you work with. You can work towards Chartered Status at a pace that best suits you; our self-paced pathway is designed to ensure you have autonomy over your own professional learning and career progression.

Each Chartered Teacher assessment unit has been purposefully developed to enable you to showcase your expertise in a meaningful way, aligned with your own needs, role, career stage and school context. Undertaking the assessment units will help you to:

- deepen and demonstrate your knowledge and understanding of evidence-informed teaching and learning, curriculum and assessment,
- develop and apply your understanding of how to engage critically with educational research
- understand how teachers - and mentors - might

develop their practice and what effective professional learning looks like

- evaluate the impact of your practice and reflect on your professional learning at key points
- undertake an inquiry project in an area of your choice, to gain deeper insights into your teaching or leadership practices, with the ultimate aim to improve outcomes for the pupils you work with.

Upon completion of all assessment units and following successful application, you will be conferred with Chartered Teacher (Mentor) Status. As one of our celebrated Chartered Teachers, you will be entitled to use the postnominals 'CTeach (Mentor)'.

Your pathway to Chartered status

1

Register as a candidate

2

Successfully pass all assessment units

Certificate in Evidence-Informed Practice

(10 credits)

Professional Knowledge (Examinations) Award (Mentor)

(30 credits)

Development of Teaching Practice Award (Mentor)

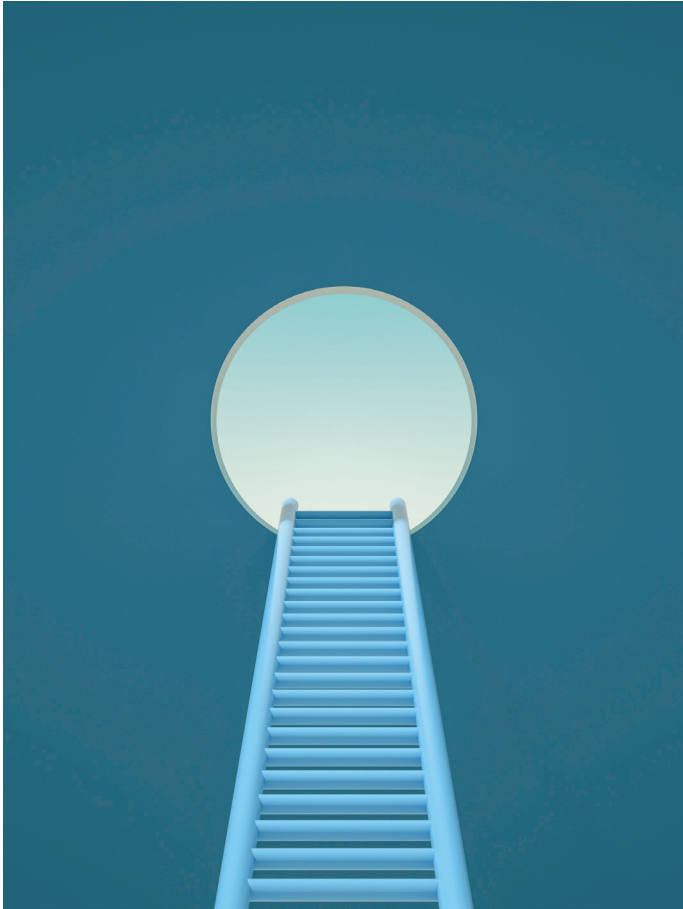
(20 credits)

Certificate in Education Research and Inquiry

(20 credits)

3

Apply for Chartered Status



To achieve Chartered status, you will need to complete the four Chartered Teacher assessment units. Each individual assessment unit is certified by the Chartered College of Teaching and offers a set number of credits towards Chartered Status.

To be awarded Chartered Teacher (Mentor) Status, you will need to have accumulated 100 credits in total.

Once you register, you will have up to three years to complete the four Chartered Teacher assessment units and apply for Chartered Teacher Status.

Once you have completed all assessment units, you will complete a formal application for Chartered Status. Upon successful application you will be awarded Chartered Teacher (Mentor) Status. You will be conferred with the postnominals 'CTeach (Mentor)' and will have the opportunity to celebrate achieving Chartered status at a formal graduation ceremony.

Assessment Units

Mentor Pathway

The mentor pathway is suitable for practising mentors who are employed as teachers or middle leaders, and who are supporting one or more teachers through a phase of professional change, learning or development.

Assessment units: Chartered Teacher (Mentor)

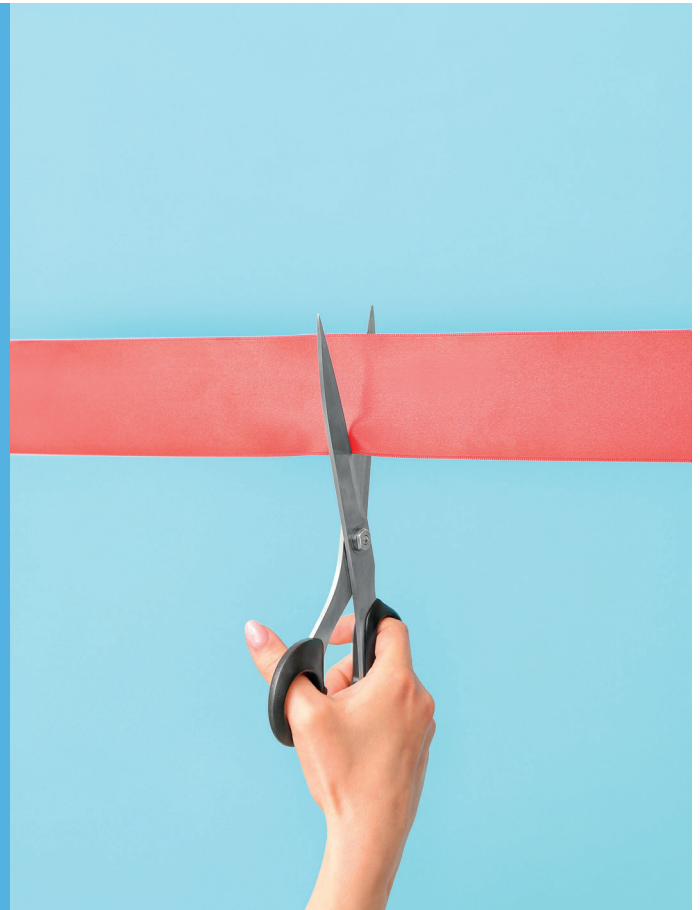
Registration to begin your Chartered Status journey

When you register as a candidate for Chartered Status you will get access to our online Chartered Teacher Candidate community and detailed guidance and content to guide you through your journey to becoming Chartered. You will also get support to start developing your Professional Learning Profile, a key assessment that you will work on throughout your journey and submit at the point you make your final application for Chartered Status. You'll self-evaluate against the Chartered Teacher (Mentor) Professional Principles, then plan and reflect on the professional learning you undertake as you work towards Chartered Status.

 Available now

 £49

 chartered.college/chartered



Assessment units: Chartered Teacher (Mentor)

Certificate in Evidence-Informed Practice

The Certificate in Evidence-Informed Practice is a self-paced, online course designed to support you in furthering your understanding of evidence-informed practice. You'll explore the principles of becoming evidence-informed; where to find trustworthy research and how to navigate its use. You'll be introduced to some of the key educational research evidence and you'll consider its implications for practice. You'll also have the opportunity to engage in learning related to some key areas of educational debate before completing your assessment for this unit, where you will submit a written response to one of our educational debate questions.

 Available now

 £99

 chartered.college/certificate



It's made me a more reflective practitioner, more aware of a wide range of research and debates in education.



My understanding of assessment validity and reliability on a theoretical level has improved dramatically, as has my understanding of questioning and especially the ways in which Direct Instruction can improve English Teaching.

Assessment units: Chartered Teacher (Mentor)

Professional Knowledge (Examinations) Award (Mentor)

This assessment unit consists of three examinations. The Multiple Choice Question Exam contains 30 multiple choice questions designed to assess knowledge of evidence-informed teaching, learning, curriculum and assessment. The Objective Structured Teaching Exercise (OSTE) is a scenario-based examination designed to assess your knowledge of formative assessment and supporting teacher development. Finally, a Written Examination is designed to assess your knowledge of effective mentoring within the context of your subject, phase or specialism.



Available from summer 2023



£139



chartered.college/professional-knowledge-award/



Assessment units: Chartered Teacher (Mentor)

Development of Teaching Practice Award (Mentor)

This assessment unit explores the evidence around effective mentoring and the development of expertise and how this might apply within the context of your mentoring practice. You will identify an aspect of your mentoring practice that you wish to develop; then engage with research and evidence around your chosen area and use this to develop an evidence-informed action plan, engaging in cycles of purposeful practice to refine your approaches and hone your expertise in your chosen area. At the end of the unit, you will reflect on your experience and share effective practice, submitting a Mentoring Development Portfolio for formal assessment.. This will include an evidence-informed action plan, two deliberate practice reflections and a recorded presentation.

 Available now

 £129

 chartered.college/development-of-teaching-practice-award

Assessment units: Chartered Teacher (Mentor)

Certificate in Education Research and Inquiry

This assessment unit will guide you through the process of practitioner inquiry, supporting you to plan and implement a piece of evidence-informed inquiry focused on an area of classroom practice. You will undertake a comprehensive literature review to support your inquiry, build your understanding of a range of research methods and approaches to analysing data, then carry out your inquiry project before writing up your findings in a written report and research poster. As part of the supporting content for this assessment unit, you will have access to an online course that will help you to familiarise yourself with practitioner inquiry and guide you through the process of undertaking your project.

 Available from autumn 2022

 £149

 chartered.college/certificate-in-education-research-inquiry

“

[It] has significantly increased my confidence and encouraged me to try and evaluate new ideas in my teaching. It has also helped me to connect to other teachers and that has been a source of many new ideas.



I have begun to investigate further study through a **Masters programme, and have applied for an internal promotion to a leadership role, neither of which I would have considered 2 years ago.**

Assessment units: Chartered Teacher (Mentor)

Application for award of Chartered Status

You can apply for Chartered Teacher Status once you have completed all Chartered Teacher assessment units. At the point of final application, you will need to be a full member of the Chartered College of Teaching and have a minimum of 3 years experience as a practising classroom teacher. Your application will include your Professional Learning Profile, an Educational Perspective Statement, outlining your informed perspective on a key theme, relevant to classroom practice, and a statement from your Headteacher supporting your application for Chartered Status.

 Available now

 £79

 chartered.college/chartered

Support available for candidates

Support to prepare for and successfully complete the assessment units is available from a range of sources.



Supporting Content

Our online platform contains supporting content and reading lists meaning you can study for Chartered Status independently.



Online Community

Throughout your journey to Chartered Status, you will have the chance to connect and share learning with other teachers and school leaders in the Chartered Teacher Candidate community.



Chartered Status CPD Partners

You can also seek support from one of our Chartered Status CPD Partners – see our website for more details.

Recognition of Prior Certificated Learning (RPCL)

Recognition of Prior Certificated Learning (RPCL) provides a means by which candidates may use previous relevant qualifications as credit towards achieving Chartered Teacher Status. This means you may be exempted from part or all of one or more of the assessment units that must be completed to achieve Chartered Teacher Status, up to a maximum of 30 chartership credits in total. These qualifications will typically have to have been completed no more than three years prior to you registering to start your Chartered Teacher journey.

Qualifications that are recognised for RPCL

We recognise completion of the Early Career Framework as providing exemption from the multiple choice question examination (10 credits), mentoring an early career teacher through the Early Career Framework as providing exemption from the Objective Structured Teaching Exercise (10

credits), and completion of any of the new National Professional Qualifications (starting from 2021 onwards) as 20 credits towards any assessment unit / task of your choice. Teachers who successfully complete the School-Led Tutoring training and assessment as part of the National Tutoring Programme can receive exemption from the multiple choice question examination (10 credits).

A list of other qualifications that are recognised for RPCL is available on our website. We regularly update our list of qualifications that are recognised for RPCL. If you have completed a relevant qualification that includes a formal assessment element and which is not currently recognised, you may wish to ask the qualification provider to contact us.

Professional Principles

Achieving Chartered Status signals that you have demonstrated expertise in the Chartered Teacher Professional Principles. The Chartered Teacher (Mentor) Professional Principles were developed in consultation with the teaching profession and are drawn from evidence around mentoring and teacher effectiveness. They define an advanced standard of practice to work towards; an aspirational standard that all mentors can use to guide their professional learning and development. Through Chartered Status, mentors are recognised for their expertise as highly accomplished teachers who draw on their teaching and mentoring expertise to support colleagues through high quality mentoring practice. The top-level principles can be seen here. Each has further details underpinning it – the full detail is available online.

“

I am a far stronger and more knowledgeable teacher than I was eighteen months ago. I now feel that I can challenge and adapt current practice in a way that I could not do before. This is by far the best CPD I have ever undertaken and I cannot rave about it enough.



Professional Principles: Chartered Teacher (Mentor)

Through our Chartered Teacher (Mentor) assessments, you will have the opportunity to showcase your professional expertise against each of the areas set out in these Professional Principles, and you will use them to guide your professional learning as you work towards Chartered Status.



Professional Principles: Chartered Teacher (Mentor)

Professional Knowledge

Has and maintains a deep knowledge of curriculum and assessment within their specialism

Has a critical understanding of effective pedagogical approaches within their specialism

Has deep knowledge of effective mentoring approaches and how to support teachers to learn and develop

Has knowledge of relevant mentoring programmes and frameworks

Has knowledge of education trends, debates and policy

Professional Practice

Establishes and maintains effective mentoring relationships

Works with mentees to formatively evaluate practice, set goals and identify action steps that address emerging needs and facilitate progress towards long-term goals

Promotes insight and facilitates the development of classroom practice through high-quality learning conversations, modelling, scaffolding, guidance and targeted support

Ensures a safe and inclusive classroom environment where all pupils learn and make progress

Provides advice and guidance, helping mentees to understand and fulfil their wider professional responsibilities

Professional Behaviours

Critically evaluates and reflects on their own teaching and mentoring practice

Is committed to engaging in relevant, career-long professional learning and encourages mentees to do the same

Exhibits and encourages collegiality by supporting, and learning from, others

Models high standards of professionalism and encourages this in mentees

Engages critically with research and evidence and encourages others to do the same

Award and graduation

Upon successful award of Chartered Status, you will receive a formal certificate recognising you as a Chartered Teacher (Mentor) and conferring you with the post-nominals 'CTeach (Mentor)'.

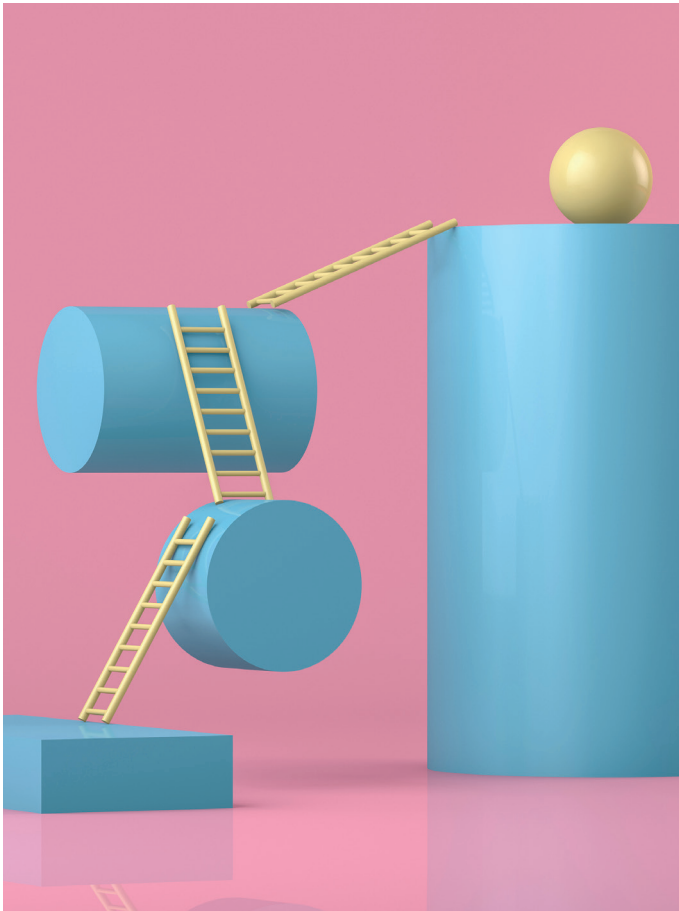
You will also be invited to celebrate your achievements at our annual Chartered Teacher Graduation ceremony.

Upon graduation, you will join a growing community of Chartered Teachers who have been recognised for their professional expertise. The names of all Chartered Teachers are listed publicly on the Chartered College of Teaching website in recognition of their achievements - these Chartered Teachers are expected to continue to demonstrate high standards of practice, to act as role models to the profession, and to show collegiality, sharing their professional

expertise and knowledge with colleagues in their schools and across the teaching profession.

As a Chartered Teacher you will be invited to exclusive events and will have the opportunity to play a key role in the work of the Chartered College, for example by writing articles for our publications and online platforms, contributing to Chartered College events or offering support to colleagues working towards Chartered Status in your local area.

Furthermore, in becoming a Chartered Teacher, you will be demonstrating your commitment to support the Chartered College's mission to raise the status of the profession, helping us to achieve our vision that teachers are working in the most effective, informed way to provide the best possible education for children and young people, now and in the future.



Eligibility criteria

To register as a Chartered Status candidate and begin working towards Chartered Teacher Status you will need to meet the following eligibility criteria:

- Be a practising teacher or school leader working with pupils up to 19 years of age, in a school in the UK or a British International School
- Be eligible for and hold current full membership of the Chartered College of Teaching, both whilst you are working towards Chartered Status and to retain your Chartered Status in future.

At the point of final application and award, you will need to have completed all Chartered Teacher Assessment Units and have a minimum of 3 years of experience as a practising classroom teacher and at least two years of experience as a mentor.

Reaccreditation

Chartered Teachers are required to undertake reaccreditation every three years. The reaccreditation process ensures that Chartered Teachers continue to uphold the high standards outlined in the Chartered Teacher Professional Principles.

Reaccreditation is a light-touch assessment process, in which Chartered Teachers are expected to demonstrate their ongoing commitment to professional learning and development of practice, including demonstrating:

- That they show continued commitment to professional learning and maintain an up to date knowledge of effective pedagogy, teaching and learning, curriculum and assessment as relevant to their phase /subject / specialism
- How they have shown collegiality and supported others, for example through mentoring, delivering CPD, supporting the work of the Chartered College

of Teaching or contributing to the knowledge-base of the profession.

- That they continue to uphold high standards of professionalism and practice.

How is this assessed?

Assessment includes three elements:

- A written reflection in which you critically reflect on your professional learning and the impact this learning has had on your practice.
- Written evidence that demonstrates how you have supported the professional learning and development of others.
- A supporting statement from your line manager or headteacher confirming that you have continued to uphold high standards of professionalism and practice.

Reaccreditation fee: £79



What our members say

“

It has given me the research and tools to develop my teaching. It has given me the confidence to work with colleagues at school and in the wider network. It has opened up lots of opportunities and helped me to become responsible for my own career development.

“

I have seen the impact in my classroom, through my more research informed decisions regarding day to day and longer term strategic decisions which is having a positive effect on the outcome of the pupils I teach.

**Register now to start
your Chartered journey**

chartered.college/chartered

**CHARTERED
COLLEGE OF
TEACHING**

The Chartered College of Teaching is incorporated by Royal Charter and a registered charity (number 313608)